

MAKING HEADLINES

New version releases for PITRAM & MICRO-MINE unveiled

MICROMINE's Pit Optimiser goes head to head with competitor optimisers

ALSO IN THIS ISSUE

Micromine Consulting in China bags another win 3

Support & training in the comfort of your own office 4

Upcoming conferences & exhibitions - We will be there. What about you? 5

Case Study Programme - Do you have a story to share? How have Micromine applications helped you? Be part of our exclusive programme! 5

PITRAM 3 – Engineered to drive the rapidly growing mine

In today's mining environment, the ability to do more with less is at the heart of virtualisation.

Adopting the right technologies can do more than just improve your business processes and site operations – it can differentiate your organisation from the rest.

PITRAM 3, the latest version of Micromine's revolutionary mine production control system, can transform your enterprise.

At the recent launch of the enhanced system which took place at the well-attended Prospectors and Developers Association of Canada 2008 tradeshow in Toronto, Canada, PITRAM 3 revealed itself to be a completely new rewrite, backed by brand new design goals and objectives.

As Micromine's Technical Services Manager Marc Smith succinctly put it during his presentation at the launch, mine control systems need to provide mine operators with the capabilities to take them from a small mining environment to a large scale mining environment, with little or no changes to the system.

"Historically, mine control systems were not included in capital budgets. Mine planners believed that control systems could be encapsulated once the mine got into a producing state. The main reason for this was the fact that control systems used to be very large, complex and costly and did not provide the right information that could drive the different stages of the mining operation," said Smith.

PITRAM 3 tackles these issues, head-on. It is a scalable solution that can be customised to suit specific mine site requirements. A mine site can now engage with a solution very early in its development and grow with it as it delivers on production and the different phases of operation.

According to Smith, PITRAM 3 which works in real-time has been designed with three guiding principles in mind – **availability** where maintenance management and maintenance planning are concerned; **utilisation** to ensure that equipment and personnel are being deployed appropriately; **optimisation** where operators will reflect on whether they are doing their jobs efficiently, and whether equipment and human resources have been used effectively.

Smith also related the events of a recent PITRAM 3 sales meeting he had, where he sat down with shift bosses, mine managers and control room operators to generate a solution for better managing their business intelligence. Within an hour, he had identified savings of more than an hour and a half for every single shift boss of each shift.

"In terms of paper management and the decisions that needed to be made, the information could be consolidated into a view in front of them. One of the guys said that the benefits are intangible. It translates to one and a half more hours to spend on the field with his crew. From both a cost and safety perspective, that's massive," Smith added.

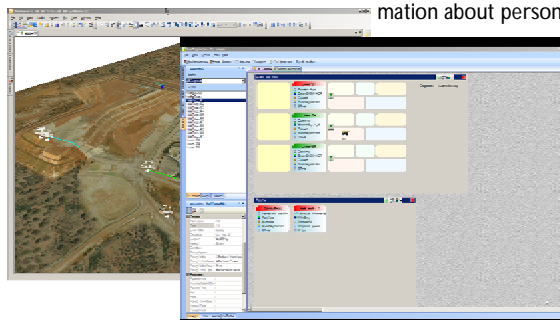
From short to medium to long term planning, PITRAM 3 has the complexities and functionality to collect, consolidate and present information that is collected on-site.

Some of the exciting features of the new release include changes to the planning environment. For example, with daily planning, a review on the progress of activity from the previous day may be conducted so a plan for the next day can be established. Based on current status and location of resources, activities can be prioritised. Through weekly planning, you can improve availability of resources by combining personnel, maintenance and mining plans.

With the development of PITRAM 3, there has been significant attention to detail with a new user interface for the data entry screen used by control room operators. Thanks to the extensive use of web technologies, any authorised user can view up-to-the-minute production, safety and maintenance reports, displaying information about personnel, equipment and materials. You can even choose to log in

remotely from any web-enabled machine anywhere in the world, reducing time that would otherwise be spent travelling to the site.

PITRAM 3 undoubtedly heralds a new era in mine production control systems. From the field to the executive suite, it pulls your resources together and aligns them with your business strategies.



(Left) Screenshots of PITRAM's Viewer and Data Acquisition screens

MICROMINE 11 exceeds performance benchmarks

Outstanding functionality, remarkable speed and dynamic user-friendliness – these three elements have turbocharged the performance and popularity of mine design and modelling tool, MICROMINE.

With the release of the MICROMINE Version 11 in November last year, the powerful tool for interpreting exploration data, generating 3D models and performing mine design is in a league of its own, dominating the exploration sector and fast becoming a leading player in the mining arena.

MICROMINE's unique Vizex (Visual Explorer) and Wireframing capabilities have earned a distinct reputation for being reliable, fast, and accurate.

Vizex is a true 3D visualization environment that allows users to simultaneously present, query, and interactively edit multiple data layers. It offers a multiple document, multiple-window interface capable of displaying any combination of graphical or tabular windows, which can be docked, tabbed, or tiled. All geological interpretation, open pit or underground mine or blasthole design, and grade control takes place within Vizex. Additional industry-leading editing and manipulation tools packaged with Vizex include curves, gradients, splitting, between-point, draping, smoothing, snapping and many more.

"Vizex helps increase efficiency and offers ease of use with respect to data management, editing and integration," said Frank Bilki, MICROMINE's training and development manager. "Feedback from customers has been exceptionally positive and they find that the Vizex tool is very powerful."

Another exclusive feature of MICROMINE is the interactive Wireframing module, which can be used to build, edit, and process surfaces and solids. By highlighting certain cross-sections, users can easily create a mathematically derived 3D solid with Auto Build Wireframe. Of course, mathematics is no substitute for solid geological understanding, so if the result isn't what a user desires, it is possible to combine Auto Build with manual linking procedures as needed.

According to Henry Wong, Exploration Manager from East Asia Minerals Corporation in Indonesia, who has been using the product for more than 15 years, MICROMINE is a critical tool for his work in visualising drillhole data, performing 3D wireframing, and creating surface data through contouring.

"I am very pleased with how MICROMINE fulfils our requirements for real-time visualisation of both 2D and 3D exploration information. This has given our geologists the edge to push our exploration dollars further and get great results particularly in drilling results,"
- Henry Wong, Exploration Manager, East Asia Minerals Corporation, Indonesia

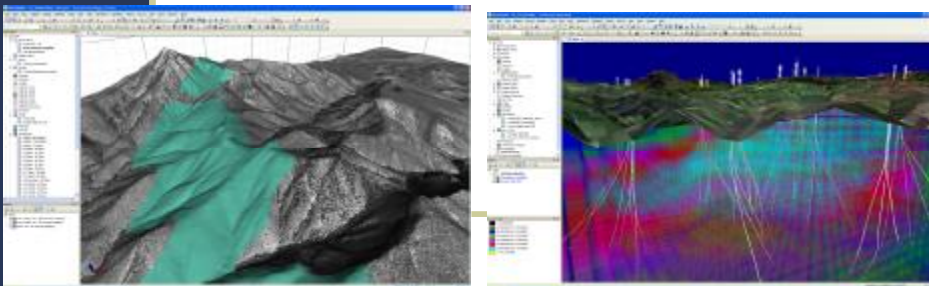
Robert Spiers, Consultant Geologist for Australian-based consulting company to the mineral resources industry, Hellman & Schofield, relies heavily on the product.

"I use MICROMINE every day. The Wireframing module is excellent and particularly useful. This is certainly an above average product," said Spiers.

The new Interactive Wireframe Boolean makes it easy to build relationships between wireframes. A user can also achieve the same result using 2D polygons with the new Cut Wireframe option, making underground grade control a snap.

The most technologically up-to-date solution of its kind, with an insightful layout, an uncomplicated and customisable user interface and an entirely Windows-based design, MICROMINE is a must-have for the geologist, surveyor or mine engineer.

Supporting small, medium and large sized mining operations, the application significantly improves operational productivity.



MICROMINE Version 11 Service Pack 1 is here!

The product specialists behind MICROMINE have had no time to rest since the release of Version 11. With MICROMINE Version 11 Service Pack 1 now available for download from the Micromine website, users can expect even more enhanced functionality. New features include Vizex Point and String dynamic file links, Vizex Wireframe selection tools to make editing easier, a Wireframe clean option, a Master Project option and improved Wireframe Boolean to provide more reliable results with a wide range of data. To experience the difference, log on to www.micromine.com and download your copy today.

Consulting team in China bags another win



Following the recent completion of a technical report for leading China-based mining and metal com-

pany Silver Dragon Resources, Micromine has been awarded another project by the company to generate a second similar report.

The Canadian National Instrument (NI) 43-101 and Australian Joint Ore Reserves Committee's report will provide Silver Dragon with an adherence work programme detailing processes and procedures relating to the drilling, sampling and analysis of the Laopandao and Dadi Silver Projects.

Laopandao and Dadi are two of the nine properties in northern China to which the company has exclusive exploration and mining rights.

According to President and Chief Executive Officer of Silver Dragon Resources Mark M. Hazout, Micromine's reports will be instrumental in planning and determining the development of the company's projects in the region.

"Our engagement of Micromine represents another important step in the development of our world-class silver projects in China.

Once the Laopandao report has been completed, we will continue with our conversion of mineralisation calculations from Chinese national standards to National Instrument 43-101 standards of disclosure," said Mr Hazout.

(Below) A Silver Dragon project in progress; photo from www.silverdragonresources.com



Micromine Consulting adds value to your software



In keeping with our high standards of providing quality products, Micromine offers a diverse range of consulting services to fit the modern needs of the mining and exploration sector.

Micromine Consulting consists of a team of highly-skilled geologists, engineers, surveyors and GIS specialists who have industry certification and many decades of combined experience.

Our consulting team has experience and expertise in independent mineral resource estimates, reserve optimisation projects, and quality control and pit optimisation exercises at the pre-feasibility and feasibility stages. We have the capability to carry out these programmes independently (ie. in a stand-alone capacity) or as part of teams within internationally recognised mine engineering and construction consulting houses.

Micromine Consulting is currently running a number of projects in Australia, China, Mongolia, Russia, Kazakhstan, Indonesia, Kyrgyzstan and Armenia. Most of the current projects are related to resource estimations compliant with the Australian Joint Reserve Committee's (JORC) standards, QA/QC analysis, pit optimisations, analysis and design.

Depending on the client's project requirements and geographical location, Micromine Consulting can leverage on its well-established global presence to deliver solutions to even the most remote areas.

Contact Micromine Consulting today to find out more about the solutions we have for you.

MICROMINE's Pit Optimiser raises the bar on pit optimization software

A recent study by Golder Associates has concluded that MICROMINE's powerful Pit Optimisation module achieved the same results in speed and performance, when tested against other industry-standard optimisation software.

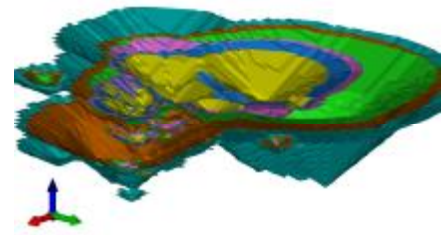
The Pit Optimisation module in MICROMINE is an ultimate pit shell and pit sequencing optimiser.

Using the Lerchs-Grossman algorithm, it calculates a subset of blocks (from an existing block model) that yields a feasible pit with the greatest value. It does this for a given geological model under a given set of pit slope constraints, mining and processing cost, metallurgical recovery and selling price parameters.

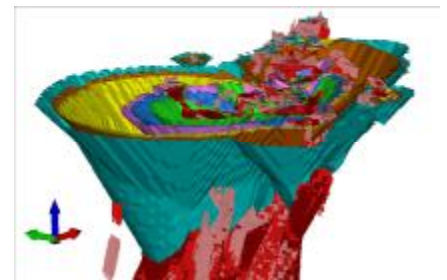
Given an identical input data set, MICROMINE's pit optimiser was assessed visually and numerically. The report reveals that on both levels including processing speed, the overall performance of the MICROMINE optimiser is comparable to that of other leading optimisation software heavyweights.

Despite being a recent addition to the MICROMINE software suite, the Pit Optimiser has dynamic functionality and has been lauded for its user-friendly interface.

According to Micromine's Technical Manager Ivan Zelina, MICROMINE's pit optimiser is second to none.



(Top and bottom right) Block model of deposit and some nested optimal pit shells in 3D view



'We are extremely pleased with the outcome of the study and it proves that our application is particularly robust. The performance of our optimiser in this study will further boost our users' confidence in this popular product,' he added.

With the recent release of MICROMINE Version 11 Service Pack 1, MICROMINE users can expect even faster processing speeds, completely outdoing its competition.

Training & Support LIVE & On Demand



We understand that your time is a very valuable commodity, so we've made it easier to access support and training through GoToMeeting, an innovative online solution. This system allows for enhanced real-time web-based meetings and provides participants with the opportunity to securely share desktop applications and documents. GoToMeeting improves the communication channels between our support and training teams and our valued customers. There is nothing more important at Micromine than customer satisfaction.

To learn more about how we can better assist you with GoToMeeting, please contact your sales representative or email sales@micromine.com.

In the Public Eye...

Micromine is exhibiting at and attending a record number of exhibitions and conferences around the world in 2008. This is an excellent opportunity for you to speak to product specialists, watch a demonstration and get a feel for how well Micromine's products will suit your organization. Head down to the conference/exhibition happening closest to you!

UPCOMING EVENTS:

What : ExpoMin (Austrade)

When : April 15 to 18 2008

Where: Santiago, Chile

Registration : <http://www.expomin.cl/>

What : CIM Conference & Exhibition

When : 4 to 7 May 2008

Where : Edmonton, Canada

Registration : <http://www.cim.org/mainEn.cfm>

What : Minexpo International 2008

When : 22 to 24 September 2008

Where : Las Vegas Convention Centre, Nevada, United States

Registration : <http://www.minexpo.com/>

What : Discover Mongolia 2008

When : 8 & 9 November 2008

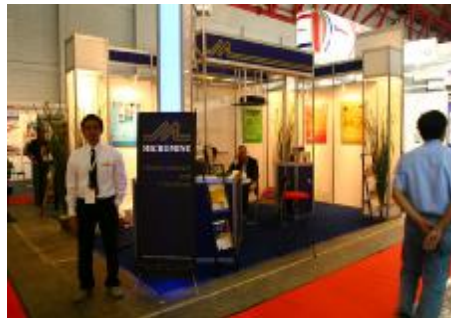
Where : Ulaan Baatar

What : China Mining 2008

When : 11-13 November 2008

Where : Beijing International Convention Center, Beijing, China

Information: <http://www.china-mining.com/>



On the Grapevine - Customer Focus

Has Micromine helped you increase your operational productivity? Micromine is in the process of launching a customer case study series which will profile clients and their experience with our products. To register your interest in participating in the program and for a chance to receive a "goodie bag," please email : marketing@micromine.com. The Micromine Marketing team will contact you shortly. In the meantime, here are comments we've received recently from customers

"As an exploration company, Trafford Resources Ltd, has found Micromine invaluable for assisting in the visualisation of the vast amounts of historical work completed on our projects as well as the planning of new programs seeking further mineralisation."

- Warrick Clent, Chief Geologist, Trafford Resources Ltd

"Micromine and Field Marshal are used extensively by our Geologists and Field Assistants to facilitate the accurate and timely collection of all exploration data. This provides a complete package from the grassroots at the drill rig to development of regional conceptual targets. Micromine' capability, coupled with its capacity to easily interface with other exploration industry software, is pivotal to our Exploration Divisions' drive to reach our goals."

- Mike O'Mara, Resource Geologist, Poseidon Nickel Ltd

"We use MICROMINE to image borehole data and then to link it up to assist with geological interpretation of the ore body. We compared MICROMINE's functionality, modules, and cost with other and decided that Micromine offers a simple but powerful tool for imaging our data at a lower price than its competitors."

- Dr Natasha Gibson, Head of Exploration, Diamonds, Mwana Africa Plc



Tricks of the Trade

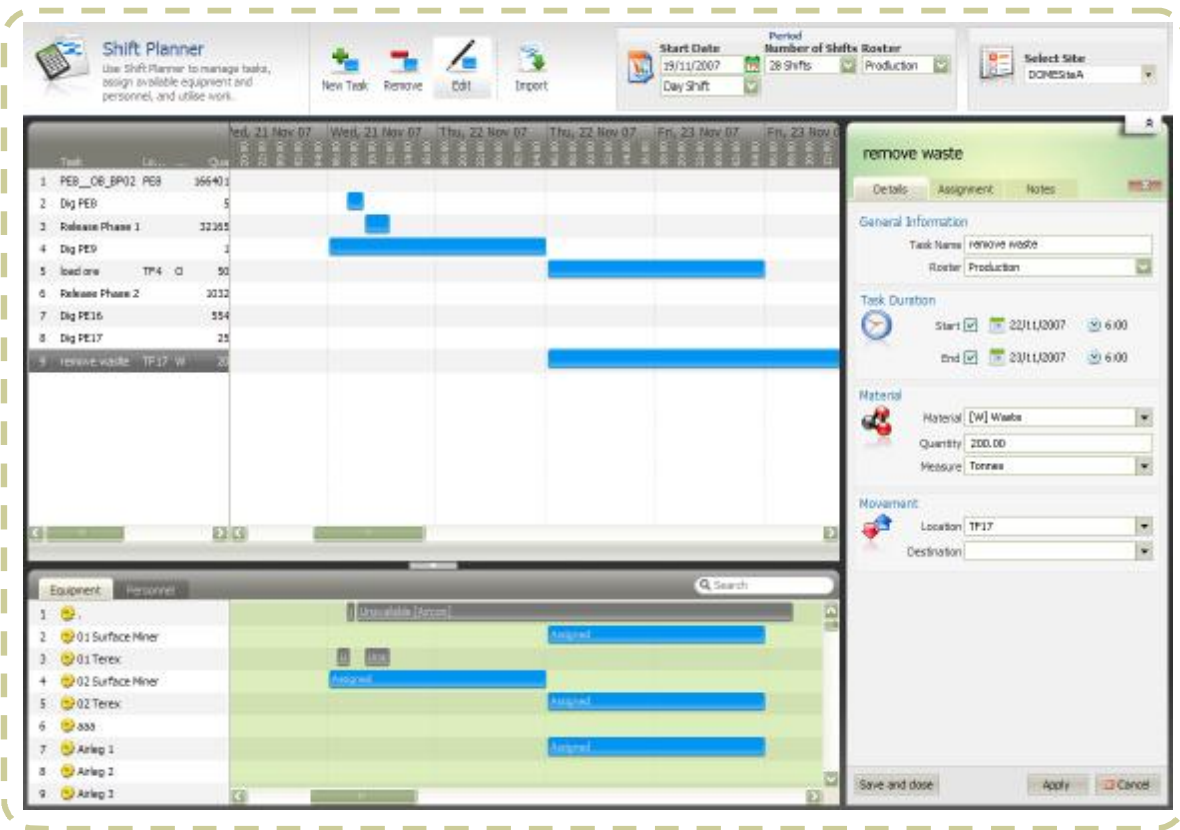
Insider secrets are usually well, insider secrets, but here at Micromine, we are more than happy to share with you little product hints that could have you working smarter. In this issue, the tips listed below are for DOME users. Are you making the most of your DOME software? Are you getting the most out of it? Here are two tips that you may not have known about this versatile application.

Run DOME Dashboards in presentation mode

Users can now run DOME Dashboards in presentation mode which allows the operator to control when the Dashboard advances to the next screen. This is particularly useful when presenting daily production reports in the Muster room. You also have instant access to real-time data and analysis through the customisable DOME dashboards.

Customisable Daily Reports

Users of DOME can now use targets defined in DOME to build up their own shift and daily reports. The report will display actual items as well as the corresponding scheduled items and variance to the schedule. The same information can also be summarised according to each month.



To find out more about Micromine's products and how they can be tailored to suit your requirements, contact:



Head Office
 Micromine Pty Ltd
 174 Hampden Road
 Nedlands 6009
 Perth, Western Australia

T: 61(8) 9423 9000
 F: 61 (8) 9423 9001
 Email: mm@micromine.com
 Website: www.micromine.com

Global Offices
 Australia * Canada * China * Indonesia* India * Kazakhstan
 Mongolia * Russia * South Africa * Turkey * UK * USA *
 Ukraine

To unsubscribe from Micromine's newsletter distribution list, please email :
marketing@micromine.com
 (Please put 'Unsubscribe Micromine newsletter' in subject heading)